

installation and maintenance sheet


USEPARTOUT SUPERFLAT

NB: These assembly instructions must be given to end users for correct maintenance and so that they know how to change the bulb. The appliance must not be tampered with or transformed and it must be installed and used as supplied and in compliance with the National Rules on Installations. Any non-compliant installations will invalidate all forms of guarantee. **THE COMPANY CANNOT BE HELD RESPONSIBLE FOR DAMAGE CAUSED BY INCORRECT ASSEMBLY.**

Features and meaning of the symbols shown on the label:
According to EN 60598-1, EN 60598-2-1

IP65 Totally dust proof.
Protected against water jets from any directions

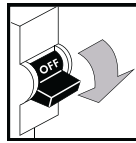
Class II DOUBLE INSULATION:
no earth required

 disposing of as urban waste is forbidden, separate collection is mandatory when the product is at the end of its life

to be performed by the installer

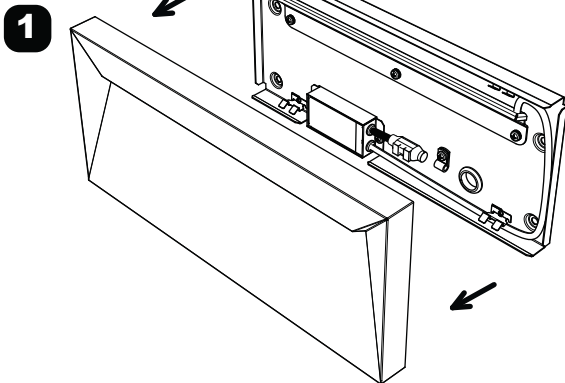
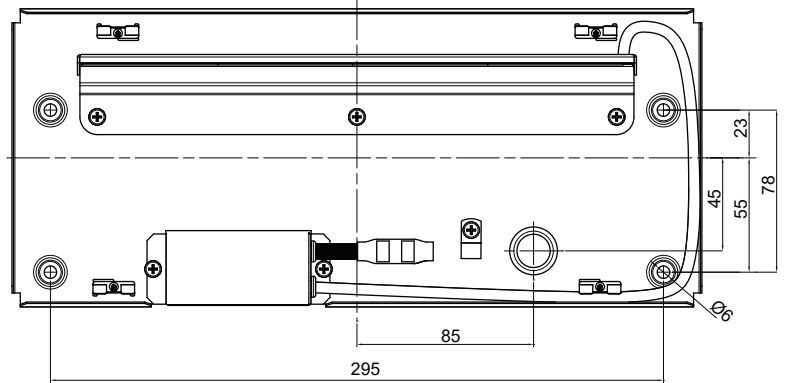
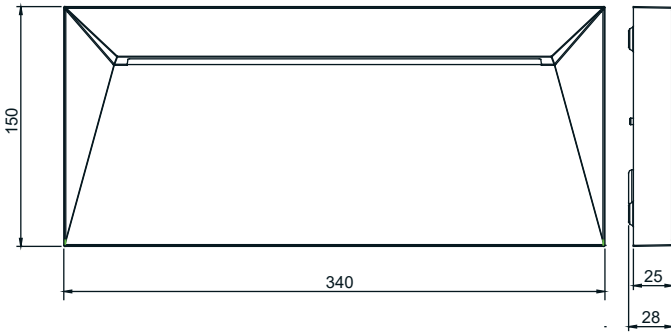


Installing drilling and use appropriate screws on the media type considered

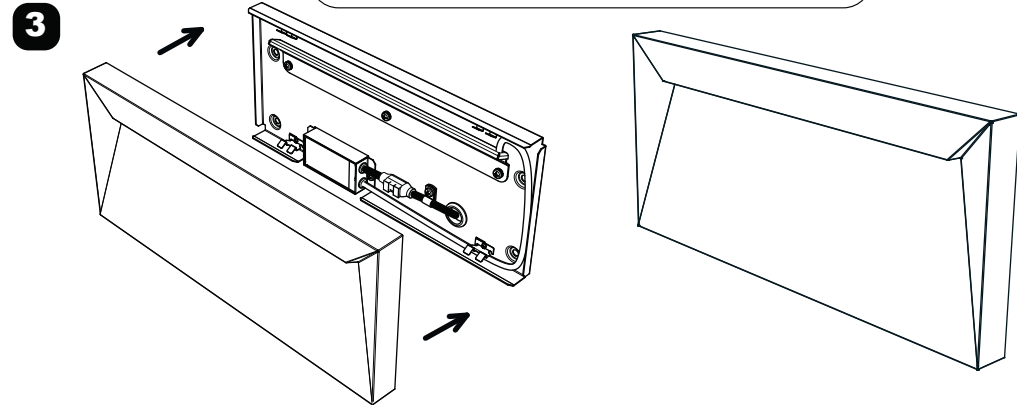
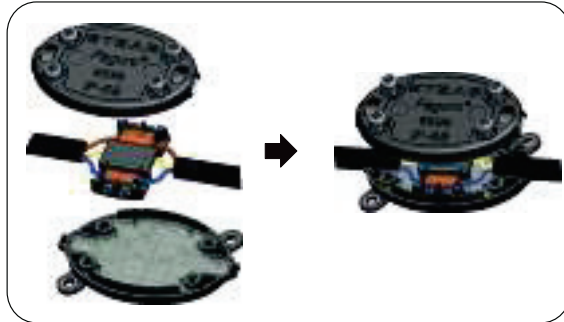
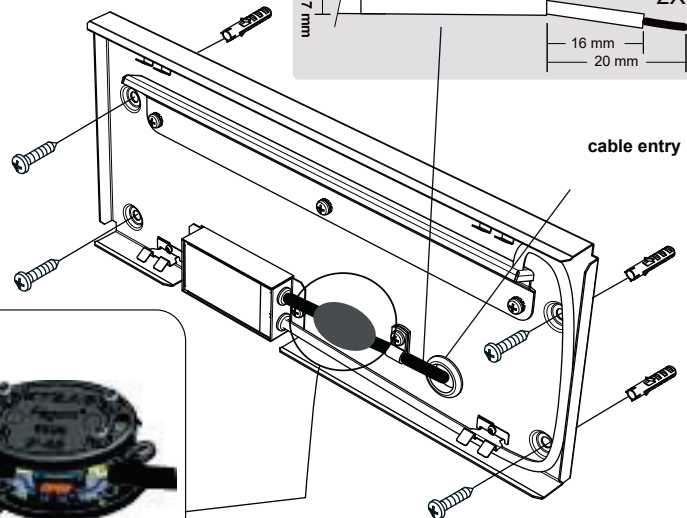
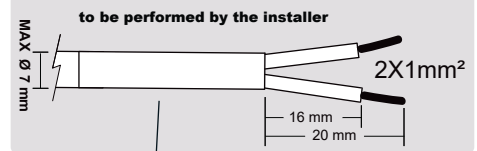



ATTENTION

Switch-off the power supply before any installation and maintenance operations



2 WIRING

The light source contained in this luminaire shall only be replaced by the manufacture or his service agent or a similar qualified person .